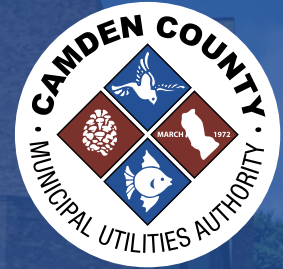


# The Pipeline

## Employee Newsletter



## WHAT'S NEW IN THE PIPELINE...

**Back in our fall edition**, we covered how the Army Corps of Engineers is assisting the CCMUA with work on the C32 Combined Sewer Overflow outfall, but we didn't discuss why the matter is so critical to the Authority.

When the CCMUA was formed, it inherited substantial parts of Camden City's former wastewater management assets: the water resource recovery facility itself actually began its life as Camden City's largest wastewater treatment plant, and the Baldwin's Run Pump Station was a smaller city treatment facility as well. That smaller facility included a CSO Outfall (serving as the plant's effluent pipe) to allow excess sewage that could not be processed during storm events to overflow into the back channel of the Delaware River.

While the CCMUA does not own the municipal sewers that ultimately bring sewage and stormwater to flow out of the outfall, the gallons that exit through it are ultimately our responsibility under the Authority's surface water pollutant discharge elimination system (NJPDES) permit with NJDEP.

Addressing C32's overflow and flooding issues is all the more important because flow monitoring conducted by CCMUA consultant CDM Smith indicates that this one outfall could constitute up to almost one-third of the city's CSO volume!

## A Look into the Future: What the C32 Project Means for Local Infrastructure

Needless to say, C32 presents a significant challenge – one that Authority will be working on for at least the next five years – but we're already taking serious action to address it! The first step is to eliminate the flow coming to Camden's system from the combined High Street Drainage Area system of neighboring Pennsauken Township that feeds into Camden's C32. This project has been in development since an analysis in 2010 initially identified sewer separation as the best solution for flooding and waste management for the area. And no wonder it has taken some time – it's a big project. It includes:

- ▶ Conversion of the existing combined sewers into dedicated stormwater lines that will return storm runoff directly to the Delaware River, including 9,885 linear feet of gravity sewer, 476 linear feet of stormwater culvert, and 12 new stormwater inlets (including excavation under a NJ Transit rail line!) in Pennsauken.



**Follow Us**

Camden County Municipal Utilities Authority   
@camdencountymua  

- ▶ Optimize the existing High Street Pump Station as a dedicated 9.8 MGD sanitary pump station, with 11,326 linear feet of new linear feet of sewer to convey sanitary flow to and from the station.
- ▶ The physical disconnection of the now separated systems

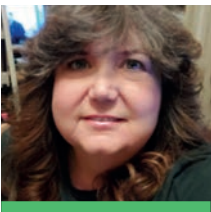
In December, the Authority selected South State General Contractors as the construction firm for the project, and construction is expected to be completed by the end of 2025.

**More than 15 years in the making, the CCMUA is ready to finally begin this exciting work!**

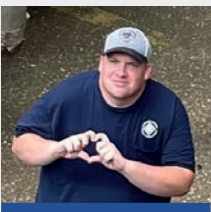


Existing Combined Sewer

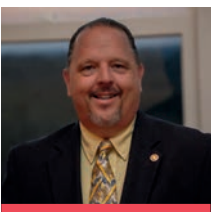
## EMPLOYEE SPOTLIGHT



Jackie Force started as a high school part-timer and never looked back, having now served an incredible 41 years of service! Whether she's helping customers, title companies, or even whole towns, Jackie's goal is simple: make things easier and bring a little joy along the way. She's worked with some of the best people, many of whom have become lifelong friends who were in her wedding (and vice versa!). And when she's not at work? You'll find her spending time with her sons, Kenny & Chris, her daughter-in-law Ashlee, and her dog Jesse, or cruising with her sisters, Linda and Colleen, who love recording their hilarious road trip adventures.



Meet Brian Carson, a CCMUA veteran with 10 years of dedication! Brian's journey started with the County's Public Works, and now he's a trusted Pump Station Operator who thrives behind the wheel of the Vactor truck. His favorite part? The benefits and the people he works with. Outside of work, Brian enjoys western horseback riding and relaxing with his dog. Thanks for all your hard work, Brian!



With extensive experience in both purchasing and the wastewater utility field, Kevin McGahey brings unparalleled knowledge and professionalism to his role here at the CCMUA. Kevin finds his work deeply rewarding, especially because it allows him to assist the CCMUA in procuring essential goods and services while ensuring compliance with federal and state purchasing laws. He also takes pride in mentoring the Purchasing Department team, fostering growth and collaboration.

# BUILDING ON SUCCESS

| 2024-2025 GOALS  | FINAL STATUS OR UPDATE   |
|--|--|
| Dry-Weather Average CBOD and TSS less than 7.5 mg/L  | <b>Attained!</b> Thanks to our talented O&M staff for their dedication and effort.   |
| Maximize Biogas Production from Anaerobic Digesters  | <b>Attained!</b> There is always room for growth in this realm, but we feel that given the current technical and contractual limits, the average of 45% of CHP Generation from Biogas is near-maximal.   |
| Commission Vehicles and Charging Stations Subsidized by NJ Board of Pub. Utilities' Clean Fleet Incentive and PSE&G EV Charging Programs | <b>Attained!</b> The two vehicles ordered through the programs have arrived, the charging stations at Admin are complete and the charging stations at the plant will be complete this month.   |
| Reach 40% of Solids Processed with One Sludge Dryer, 85% with Both Dryers  | <b>Attained.</b> Year averages were at 42%, exceeding our target with one dryer.   |
| Zero Neighborhood Odor Reports attributable to the CCMUA   | <b>In Progress.</b> It is important to set this goal at the difficult to attain 'zero-tolerance' policy, out of respect for our neighbors. This year we limited the number of external odor reports attributable to the Authority to under 10, and used data collected from these reports to identify where we can continue to improve, with some fixes already under way. |
| Overhaul Existing EMS Manual to Fulfill Requirements of New NJPDES Surface Water Quality Permit  | <b>In Progress.</b> NJDEP released the final version of the CCMUA's new NJPDES Surface Water Quality Permit in January 2025 and we are actively updating and reorganizing elements of the Authority's O&M Manual and Emergency Plans to match new requirements in these areas. These updates are planned for completion by the NJDEP's mid-year reporting period.          |

## 2025-2026 GOALS

- ▶ Dry-Weather Average CBOD and TSS less than 7.5 mg/L
- ▶ Production of 415,000 cubic feet of biogas and 250,000 cubic feet of methane on a daily basis (a similar goal, but a better measure of our effect)
- ▶ Zero Neighborhood Odor Reports attributable to the CCMUA
- ▶ Issue procurement for battery storage for the vacuum swing adsorption system (critical for oxygen generation) by the end of 2025
- ▶ Complete design of the new Scum Facility by the end of 2025
- ▶ Study chemical use for optimization, with the target of a 10% reduction in usage.
- ▶ Take part in at least 12 public input events and 24 public outreach events over the course of the year

## SAFETY CORNER

The Safety Corner is usually here to tell you about precautions you can take, an upgrade we're making to our equipment, or policies that are designed to keep you and your coworkers safe from danger or accident. But it's just as important to consider your long-term safety by taking care of yourself! We recently procured a partnership with service provider Ramp Health to offer one-on-one health coaching to employees at no cost. They will offer guidance and support for your health goals, ranging from workout tips to meal plans and recipes, to help with smoking cessation. Ramp's coach will be on the grounds on the 2nd and 4th Thursdays of every month. Even better? Employees can receive a bonus two-hour floating holiday for attending their first session!



**For more details about the program and to sign up for the next session, contact Steph Madden at [smadden@ccmua.org](mailto:smadden@ccmua.org)**

## MARK YOUR CALENDAR

MAR  
15

Create Your Own Wall Hanging Planters at Camden FireWorks  
[camdenfireworks.org](http://camdenfireworks.org)

APR  
12

Collingswood Green Festival

APR  
18

Good Friday

APR  
22

Earth Day

APR  
24

Bring Your Child To Work Day

APR  
25

Arbor Day

APR  
26

Audubon Day

APR  
26

Camden County Plant Sale

MAY  
3

Barrington Family Fun Day

MAY  
2

**MAY 2ND – MAY 18TH**  
S. Camden Theater Company  
Presents: How The Light Gets In

MAY  
5

**MAY 5TH – 9TH**  
NJWEA Conference in  
Atlantic City

MAY  
22

Walt Fest (Laurel Springs Day)  
Awaiting Confirmation, but typically  
the third Saturday of May

MAY  
24

Collingswood May Fair

MAY  
23

Camden Night Gardens  
TBD, typically the Friday before  
Memorial Day

MAY  
26

Memorial Day